



THE CEO'S INVOLVEMENT IN SITE SELECTION

CEO SURVEY AND DATA ANALYSIS

prepared by

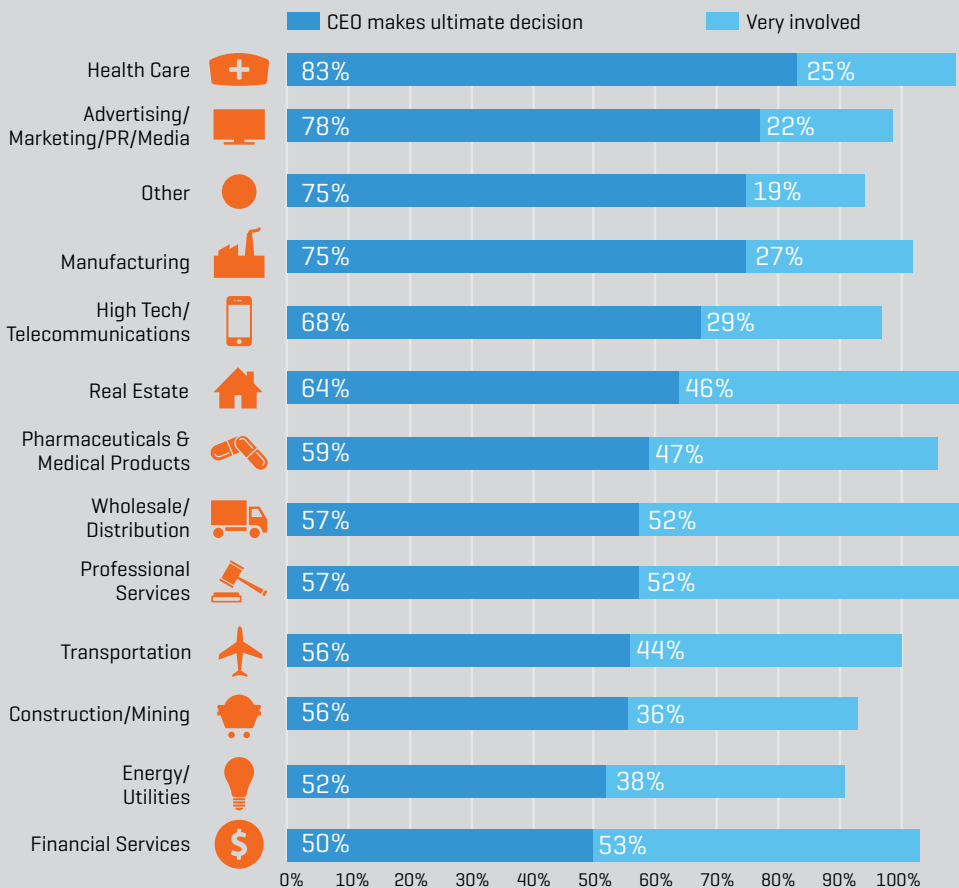
Chief Executive

CEOs CONTROL SITE SELECTION DECISIONS

Chief Executive Group surveys active CEOs each year to gauge their attitudes and opinions toward business locations. This effort is consistently the most comprehensive of its kind in the world. In 2015, 511 survey responses were received, of which 485 qualified for analysis, which was used in the 2015 Best & Worst States for Business rankings.

CEO Involvement Is High Across Industries

[MULTIPLE SELECTIONS ACCEPTED, SO NUMBERS MAY EXCEED 100%]

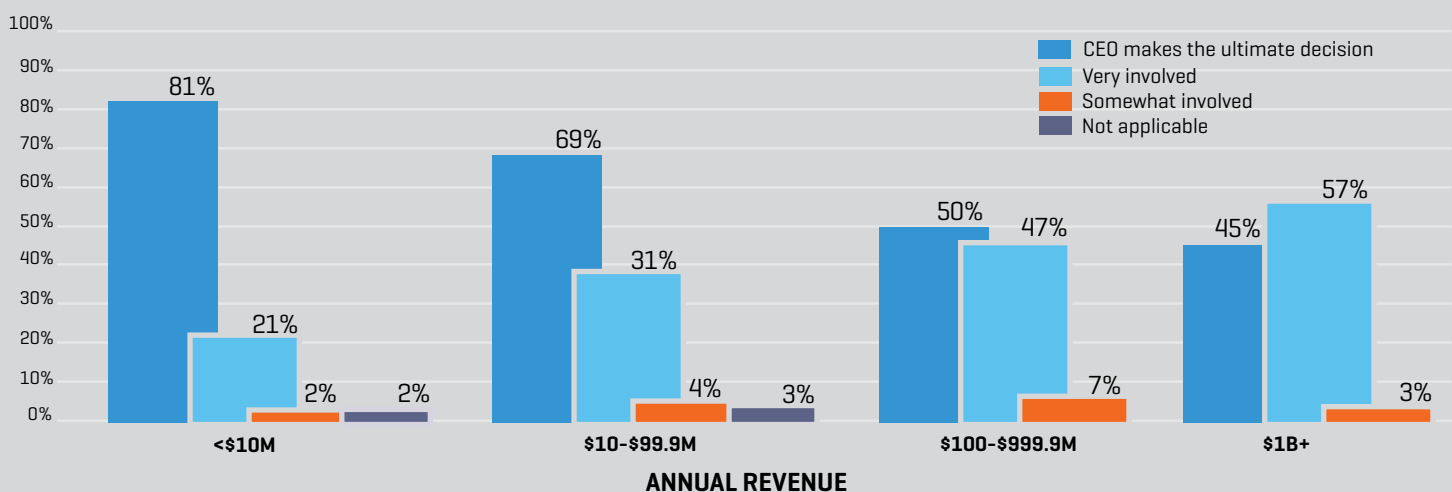


You want to be someplace where people support job creation, where it's attractive to talent."

—GE CEO Jeff Immelt, who was personally involved in the decision to move GE HQ from Connecticut to Massachusetts

The CEO's Responsibility for Site Selection Decisions Varies by Company Size

[MULTIPLE SELECTIONS ACCEPTED, SO NUMBERS MAY EXCEED 100%]




Chief Executive

Chief Executive Group improves the effectiveness of CEOs and inspires free market capitalism that provides opportunity and fairness for all. We accomplish this by providing real-world best practices, actionable analysis and meaningful peer interactions.

Chief Executive Group provides clients with strategic thinking, messaging, delivery and distribution that educates, informs and builds relationships with business decision makers. Our team has helped transform the economic development results of cities, states, regions and countries.

Contact:

Chris Chalk, Associate Publisher

 847-730-3662

 cchalk@chiefexecutive.net